



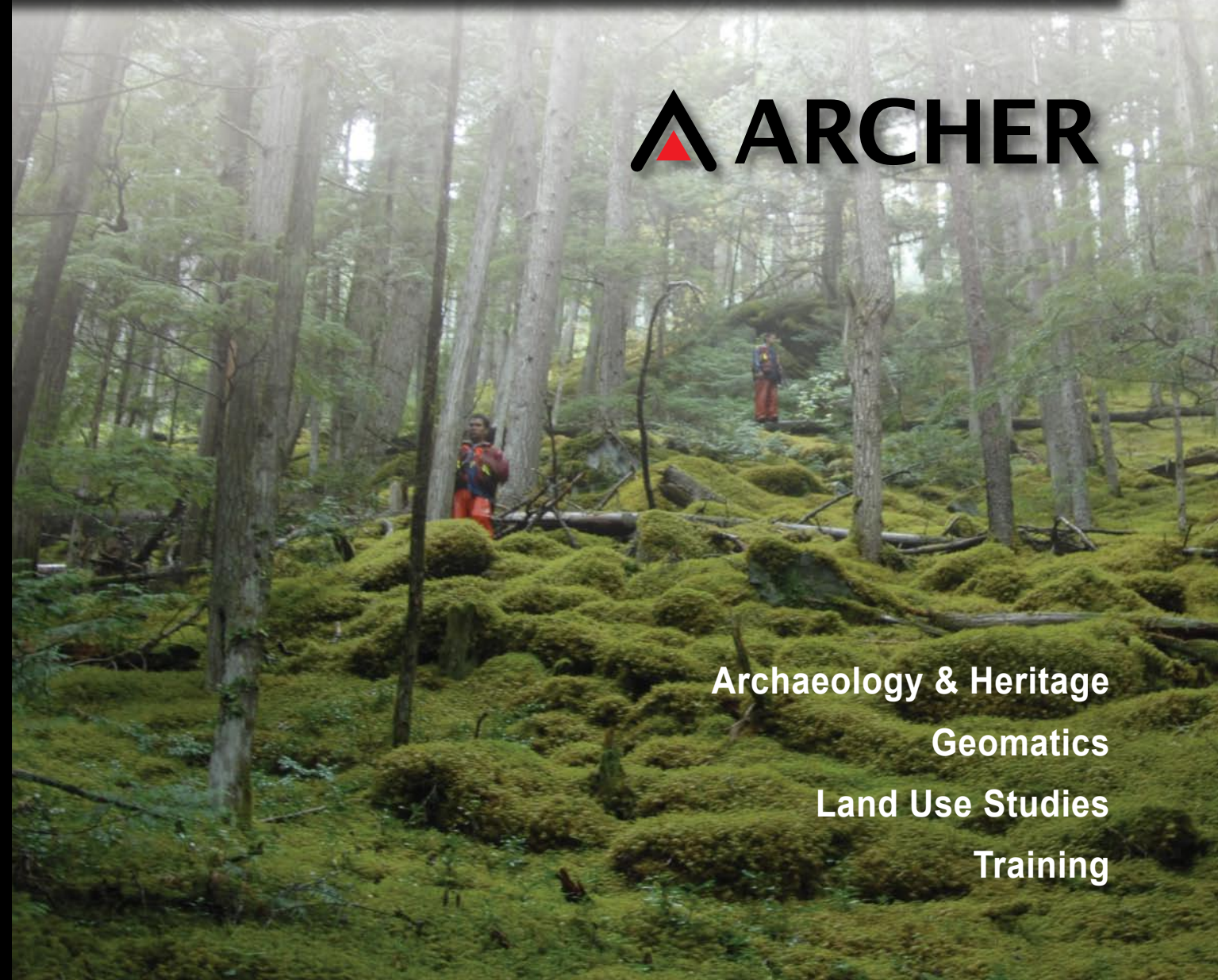
Through Education, Integrity & Quality in Service,
 Archer is committed to promoting the values of
 Canada's Natural & Cultural Landscapes.

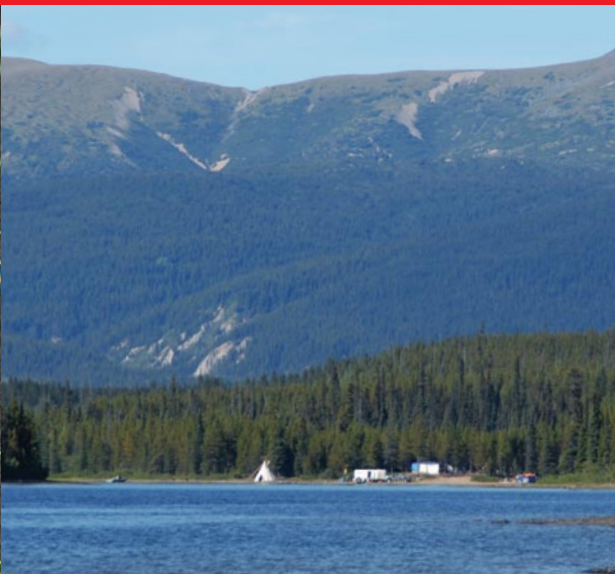
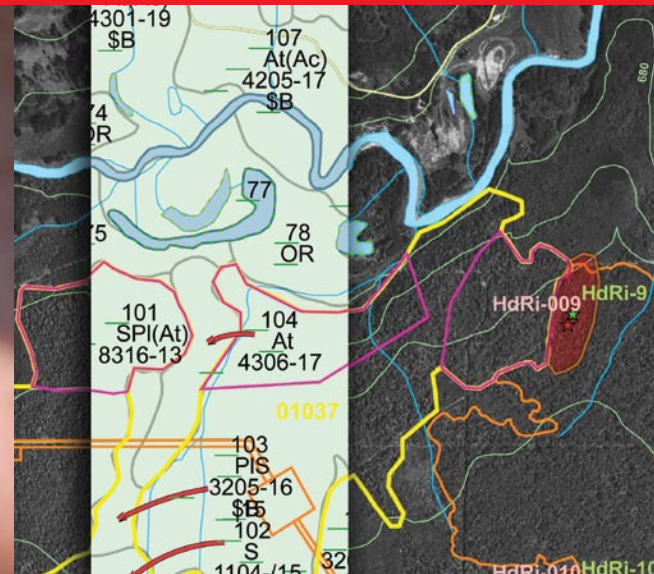


Serving Western Canada since 1995
1.877.261.5591
www.ArcherCRM.ca



Archaeology & Heritage
 Geomatics
 Land Use Studies
 Training





Diversity

Offered simultaneously, our services and products provide an efficient, expedited solution.

Diligence

Archer services meet or exceed government regulatory requirements, assuring product quality.

Capability

Archer can rapidly and economically mobilize to meet client objectives and time lines.

Compliance

Our Safety Policy and Environmental Management System meet or exceed all government regulations.

Community

We add value to our services by providing employment opportunities and support to local communities.

Archaeology & Heritage

Archaeological remains are non-renewable. It is our goal to promote and preserve the past through diligent work, to ensure future generations remain aware of Canada's cultural history.

Archer specializes in providing comprehensive & accurate cultural resource management (CRM) information for the effective management of time-critical projects. This information is necessary for compliance with Provincial and Federal heritage legislation.

Archer has extensive CRM experience related to all types of industries, civil engineering, and academic research. Our staff has experience throughout Canada and overseas.

Our services include:

- Heritage Resource & Archaeological Impact Assessments
- Culturally modified tree (CMT) survey
- Archaeological mitigation services
- Archaeological potential modeling
- Overview assessments
- Site monitoring & surveillance
- Archaeological & heritage site searches & research
- Archaeological site delineation
- Archaeological, historical, cultural & ethnographic research
- Archaeological materials laboratory analysis
- CMT increment core & stem-round-sample (SRS) analysis

We also conduct independent reviews of archaeological documents such as permit applications, proposals, reports, and policy statements.

Geomatics

Innovation and creativity are key to a successful visual presentation. The gathering, processing and delivery of accurate spatial information is a primary concern at Archer. Our extensive library of digital information, combined with continued investment in geo-spatial technologies, ensures our clients receive a quality product every time.

Our services include:

- Orthophoto analysis
- GIS analysis (overlays, proximity analysis, etc.)
- Field verification of spatial data
- Data acquisition & conversion
- Data modeling
- 3D viewscape modeling with flythrough
- Spatial database development
- Cartographic presentation
- Plotting & printing



Land Use Studies

The compilation & presentation of culturally sensitive Traditional Use and Environmental Knowledge is key to the effective understanding of First Nation issues and concerns. Archer has extensive experience in effectively documenting and compiling the cultural knowledge of individuals & communities.

Our services include:

- Project management & coordination
- Data compilation & management
- Videography
- Public presentation of sensitive information
- Field verification
- Documentation & mapping
- Facilitation of cultural camps
- Traditional Use & Knowledge Studies
- Ethnobotanical Studies

Training

An integral part of CRM is the training of individuals responsible for the safekeeping of cultural heritage and the development of responsible and diligent management strategies. To this end Archer can deliver technical workshops and training to community and corporate groups in general archaeological resource management, legislation, policy, field techniques, site identification, excavation, and CMT recording.

Archer can also assist in the development of organizational management practices and policies. As field operations and legislation change, these policies provide an independent guide for the management and protection of cultural and heritage resources.

Safety

Archer CRM Partnership is committed to the safety & training of all its employees and contractors. Archer is the first independent archaeological consulting firm in Western Canada to obtain its BC Health & Safety Certificate of Recognition (COR).

Our goal: No accidents, No incidents, No days lost.